

SYMBOLS

LIGHTS

- ETC S4 10 @ 575w
- ETC S4 19 @ 575w
- ETC S4 26 @ 575w
- ETC S4 36 @ 575w
- ETC S4 50 @ 575w
- ETC S4 Zoom 25-50 @ 575w
- ETC S4 PAR MFL @ 750w
- Chauvet DJ Freedom H1 @ 35 w
- Vanilite VL2600 Profile @ 820 w
- USITT Practical @ TBD
- Radiance Hazer @ 500 w

ACCESSORIES

- 6.25in Top Hat
- S4A Template Holder
- Morpheus M Fader
- Drop-in Iris
- S4 Followspot Yoke

KEY

- R053+ Color
- R119 Template
- 2 Unit #
- 555 Address

NOTES

- GENERAL**
- Tick marks indicate 18" spacing.
 - Please stiffen all pipes against rotation.
- ELECTRICS**
- Electric trims are from actual stage floor to center of Electric pipe.
- FLOOR MOUNTS**
- Exact location of all floor mounts TBD by designer in space.
- FOCUS**
- Please drop all color and frost prior to focus.
 - Please have spare R132, R119, R114, L209 and blackwrap available at focus.



Spring Awakening

Music by Duncan Sheik
Book and lyrics by Steven Sater

- DIRECTION Christine Abraham
- SCENERY Blythe Ryther
- CLOTHES Greer Gardner
- LIGHT Miranda Carpenter
- SOUND Aerik Harbert
- PROJECTION

Young Theatre

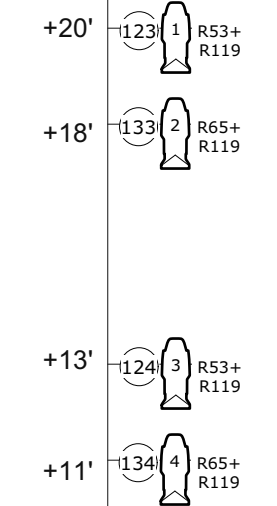
Overhead Plot

1/4" = 1'0"

Assistant LD	Anabella Piner	Sheet #	1
Master Electrician	Lois Bryan		
Date	3/8/2025		

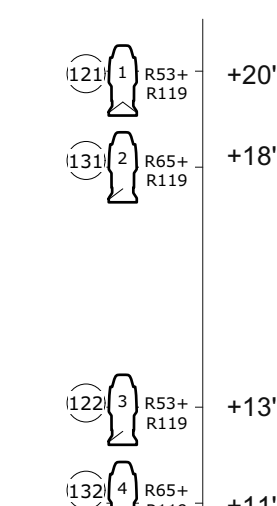
Revised _____ of 5

ALL SPECIFICATIONS RELATE SOLELY TO THE APPEARANCE OF THE DESIGN. NOT TO MATTERS OF STRUCTURAL INTEGRITY AND/OR SAFETY. THE DESIGNER IS NOT RESPONSIBLE FOR DAMAGES RESULTING THROUGHOUT THE FAILURE TO EXECUTE THE DESIGN AND PLANS PREPARED BY THE DESIGNER IN A SAFE AND RESPONSIBLE MANNER. THE DESIGNER IS PREPARED TO ALTER ANY SPECIFICATIONS WHICH MAY NOT BE COMPATIBLE WITH PROPER SAFETY PRECAUTIONS.



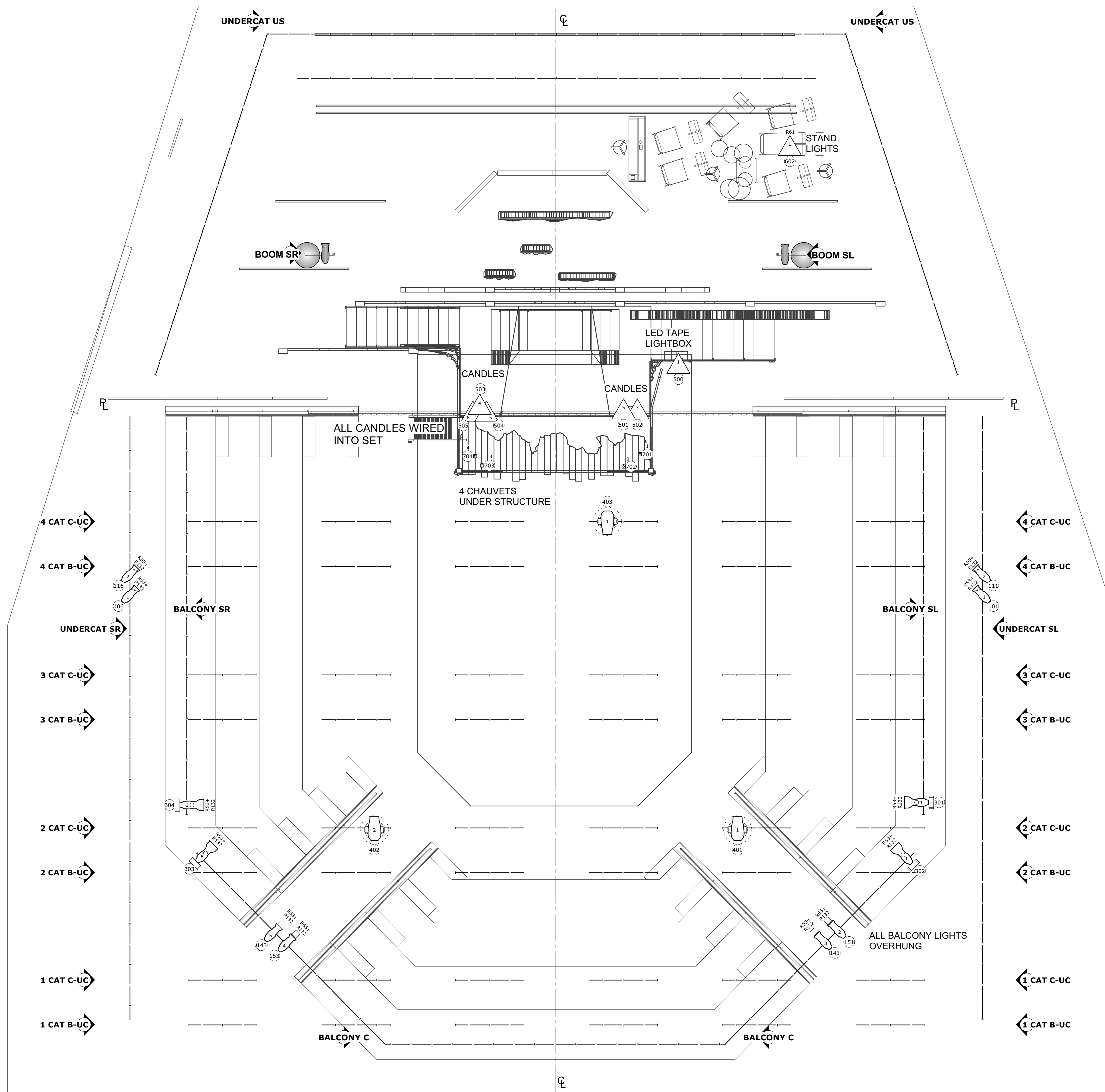
BASE

2.2 Boom SR
Scale: 1/4" = 1'-0"



BASE

2.3 Boom SL
Scale: 1/4" = 1'-0"



2.1 Balcony, Deck, Undercats
Scale: 1/4" = 1'-0"

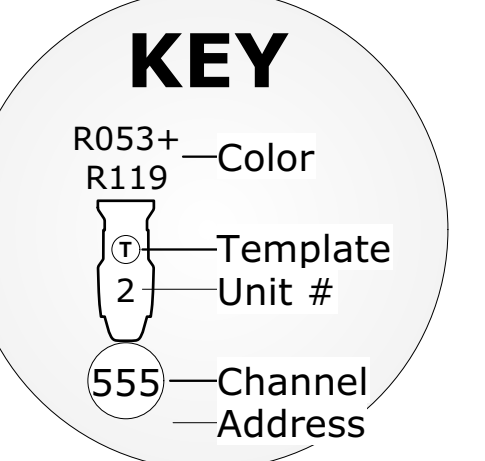
SYMBOLS

LIGHTS

- ETC S4 10 @ 575w
- ETC S4 19 @ 575w
- ETC S4 26 @ 575w
- ETC S4 36 @ 575w
- ETC S4 50 @ 575w
- ETC S4 Zoom 25-50 @ 575w
- ETC S4 PAR MFL @ 750w
- Chauvet DJ Freedom H1 @ 35 w
- Varilite VL2600 Profile @ 820 w
- USITT Practical @ TBD
- Radiance Hazer @ 500 w

ACCESSORIES

- 6.25in Top Hat
- S4A Template Holder
- Morpheus M Fader
- Drop-in Iris
- S4 Followspot Yoke



- NOTES**
- GENERAL**
- Tick marks indicate 18" spacing.
 - Please stiffen all pipes against rotation.
- ELECTRICS**
- Electric trims are from actual stage floor to center of Electric pipe.
- FLOOR MOUNTS**
- Exact location of all floor mounts TBD by designer in space.
- FOCUS**
- Please drop all color and frost prior to focus.
 - Please have spare R132, R119, R114, L209 and blackwrap available at focus.



Spring Awakening

Music by Duncan Sheik
Book and lyrics by Steven Sater

DIRECTION Christine Abraham
SCENERY Blythe Ryther
CLOTHES Greer Gardner
LIGHT Miranda Carpenter
SOUND Aerik Harbert
PROJECTION

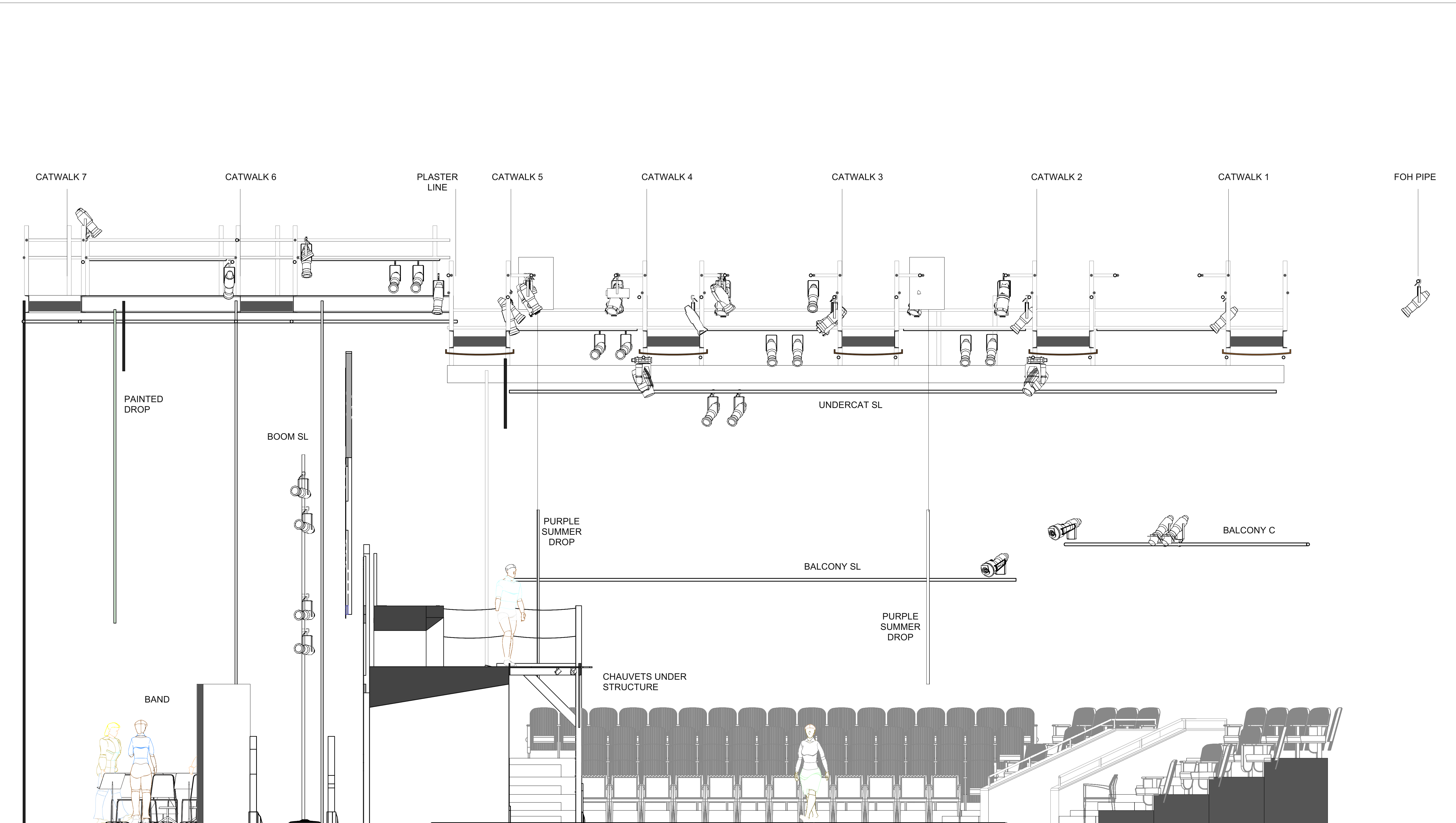
Young Theatre

Balcony, Deck, Undercats

1/4" = 1'-0"

Assistant LD	Anabella Piner	Sheet #
Master Electrician	Lois Bryan	2
Date	3/8/2025	
Revised		of 5

ALL SPECIFICATIONS RELATE SOLELY TO THE APPEARANCE OF THE DESIGN. NOT TO BE TAKEN AS A GUARANTEE OF STRUCTURAL INTEGRITY AND/OR SAFETY. THE DESIGNER IS NOT RESPONSIBLE FOR DAMAGES RESULTING THROUGH THE FAILURE TO EXECUTE THE PROVIDED PLANS AND PERFORMED BY THE CONTRACTOR IN A SAFE AND RESPONSIBLE MANNER. THE DESIGNER IS PREPARED TO ALTER ANY SPECIFICATIONS WHICH MAY NOT BE COMPATIBLE WITH PROPER SAFETY PRECAUTIONS.



SYMBOLS

- LIGHTS**
- ETC S4 10 @ 575w
 - ETC S4 19 @ 575w
 - ETC S4 26 @ 575w
 - ETC S4 36 @ 575w
 - ETC S4 50 @ 575w
 - ETC S4 Zoom 25-50 @ 575w
 - ETC S4 PAR MFL @ 750w
 - Chauvet DJ Freedom H1 @ 35 w
 - VariLite VL2600 Profile @ 820 w
 - USITT Practical @ TBD
 - Radiance Hazer @ 500 w
- ACCESSORIES**
- 6.25in Top Hat
 - S4A Template Holder
 - Morpheus M Fader
 - Drop-in Iris
 - S4 Followspot Yoke

KEY

- R053+ — Color
- R119 — Template Unit #
- 555 — Channel Address

NOTES

- GENERAL**
- Tick marks indicate 18" spacing.
 - Please stiffen all pipes against rotation.
- ELECTRICS**
- Electric trims are from actual stage floor to center of Electric pipe.
- FLOOR MOUNTS**
- Exact location of all floor mounts TBD by designer in space.
- FOCUS**
- Please drop all color and frost prior to focus.
 - Please have spare R132, R119, R114, L209 and blackwrap available at focus.



Spring Awakening

Music by Duncan Sheik
Book and lyrics by Steven Sater

- DIRECTION Christine Abraham
- SCENERY Blythe Ryther
- CLOTHES Greer Gardner
- LIGHT Miranda Carpenter
- SOUND Aerik Harbert
- PROJECTION

Young Theatre

Section
1/4" = 1'0"

Assistant LD	Anabella Piner	Sheet #
Master Electrician	Lois Bryan	3
Date	3/8/2025	
Revised		of 5

ALL SPECIFICATIONS RELATE SOLELY TO THE APPEARANCE OF THE DESIGN, NOT TO THE FUNCTIONALITY, SAFETY OR DURABILITY OF THE DESIGN. THE DESIGNER IS NOT RESPONSIBLE FOR DAMAGES RESULTING FROM THE FAILURE TO EXECUTE THE DESIGN AND PLANS PREPARED BY THE DESIGNER IN A SAFE AND RESPONSIBLE MANNER. THE DESIGNER IS PREPARED TO ALTER ANY SPECIFICATIONS WHICH MAY NOT BE COMPATIBLE WITH PROPER SAFETY PRECAUTIONS.